

# OIDAI 60th -AI×DX×共創-

追手門学院大学

OIDAI

OIDAI is the official abbreviation for Otemon Gakuin University.

We are the only university in Japan that uses the kanji character “追” (meaning “quest”) in the name, which is one of the factors that shapes our unique identity.

 **OTEMON GAKUIN UNIVERSITY**

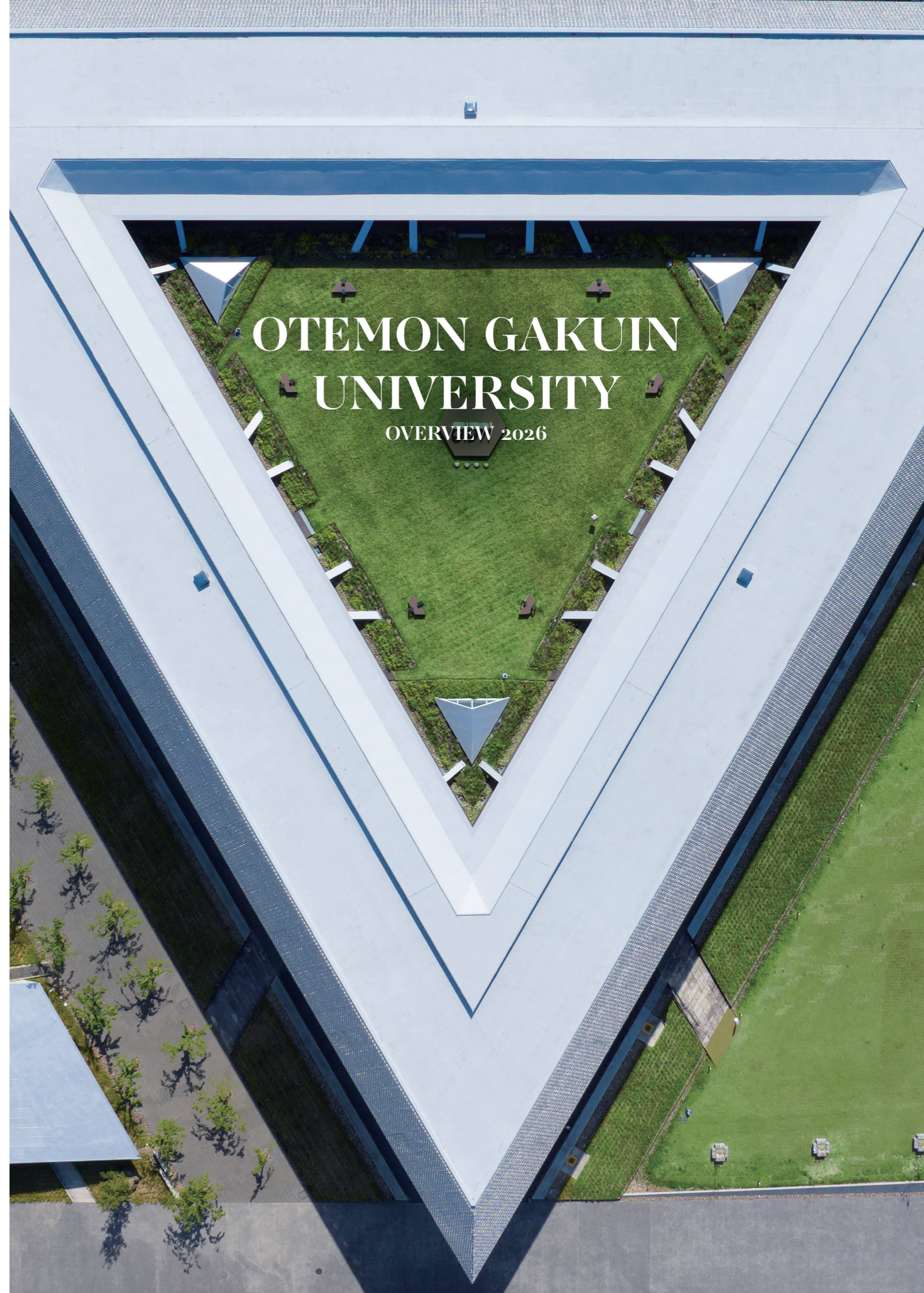
1-1, Oda Toshiba-cho, Ibaraki City, Osaka 567-8620 Japan

<http://www.otemon.ac.jp/english/>

Division of International Cooperation and Planning

otemon-cis@ml.otemon.ac.jp

+81-(0)72-697-8162



# President's Message



新藤 正博

**Masahiro Shindo, Ph.D.**  
President,  
Otemon Gakuin University

I am pleased to extend my greetings to our partners around the world. The educational principle of OIDA is “Resilient Independence, Meaningful Contribution,” which has continued to drive us forward and guide our efforts to help students develop the ability to act on their own and play a leading role for the good of society.

Against the uncertain backdrop of today’s society, it is imperative to accelerate digital transformation (DX) throughout the university. By doing so, we are investing in the development of individuals with the skills needed to thrive in a complex future society. Specifically, we help students foster critical thinking skills through our proprietary educational model, Work-Is-Learning (WIL) (see p.9), while building a system to enable the university to serve as a leading R&D platform.

These initiatives are part of our ambitious Long-Term Vision 2040, which aims to win global recognition as a hub of innovation. Based in Osaka, renowned for its vibrancy, we hope to deepen international collaboration to become a knowledge hub that brings together diverse values and talents to contribute to solving global issues.

We greatly look forward to working with educational and research institutions and researchers around the world. By promoting academic exchanges, encouraging joint research, and solidifying partnerships among organizations, we hope to grow mutually and make meaningful contributions to international society together with our global partners for a bright future.

## Contents

01	President's Message
03	About OTEMON
05	Campus
07	OIDAI - At a Glance -
09	Education Pick up
11	Faculties & Graduate Schools
17	Research Pick up
23	International Cooperation
25	Location



# About OTEMON

Otemon Gakuin started as an elementary school attached to Osaka Kaikosha, founded in 1888 by Tomonosuke Takashima, a former cabinet minister. This was the first private elementary school in western Japan.



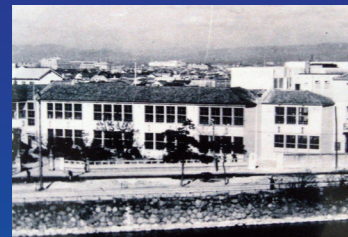
1888

## OTEMON and OSAKA castle

Osaka Castle is a historical spot, a famous symbol of Osaka for over 400 years. The predecessor of Otemon Gakuin was located adjacent to Osaka Castle, with the name "Otemon" coming from the official word for the main gate of a castle.



Otemon Gakuin Otemae Senior High School opened.



1947

Otemon Gakuin Otemae Junior High School opened.

1950

Otemon Gakuin University finally opened, as part of the commemoration of the 80th anniversary of Otemon Gakuin.

1966



Otemon Gakuin Junior High School and Senior High School opened.

1967

The kindergarten was licensed as a certified nursery school.

1969

Otemon Gakuin Kindergarten opened.



Otemon Gakuin University's Ibaraki Sojiji Campus opened.

2013



Sojiji Campus grew to accommodate more than 8,000 students.

2019

Today, Otemon Gakuin has established itself as a comprehensive educational institution with a kindergarten, an elementary school, junior high schools, senior high schools, a university and graduate schools.

2025



# OIDAI Long-term vision 2040

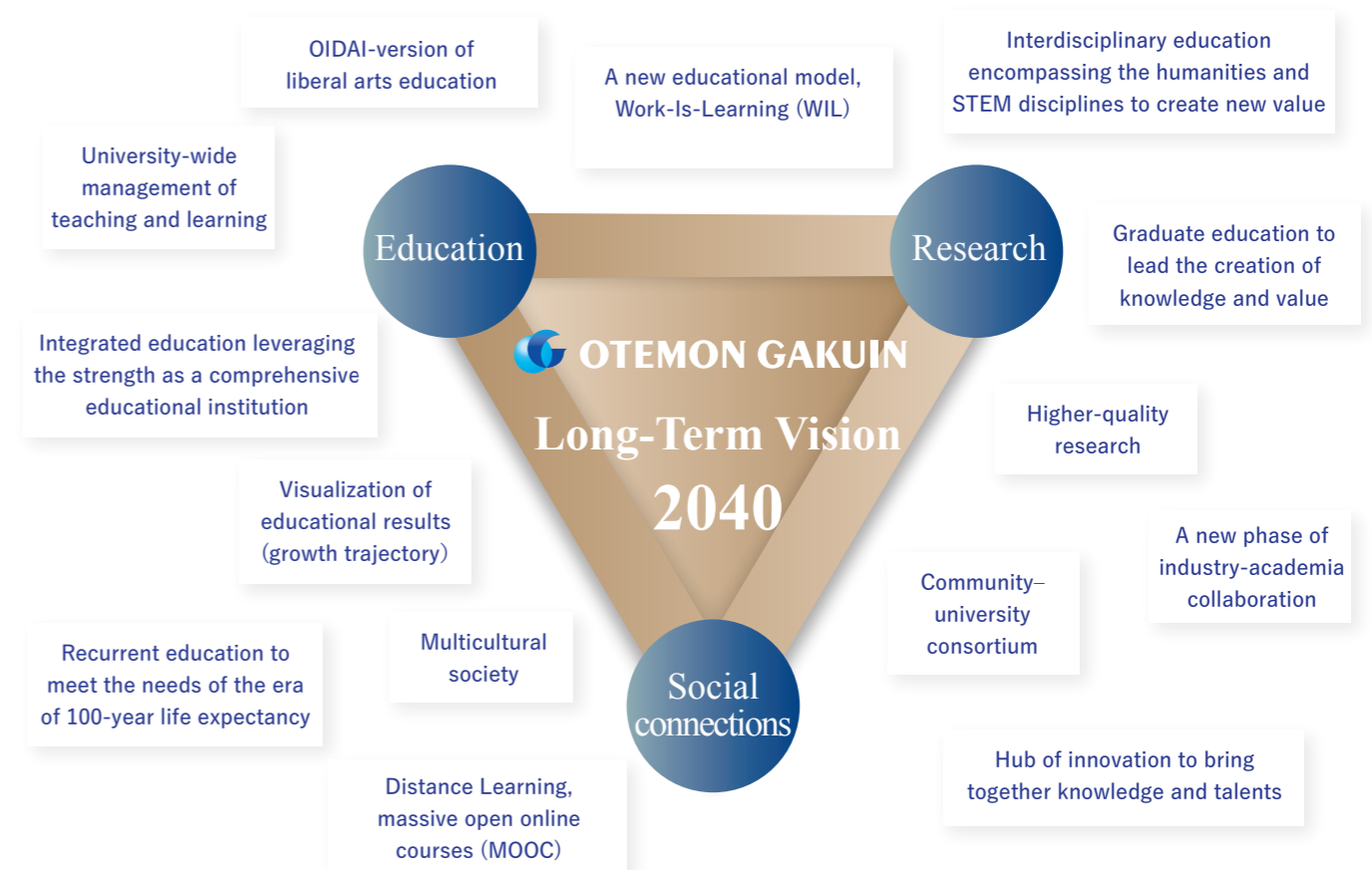
OIDAI will win global recognition as Japan's leading educational and research institution bringing together students and faculty members with diverse values and cultures from around the world to continue to generate innovation and produce outstanding educational and research results.

## Social changes expected to occur by 2040



## OIDAI's policy for adapting to social changes in 2040

focusing on the three key factors: "education," "research" and "social connections"



OIDAI will work as one to achieve the above vision by 2040.



A Hub of Knowledge

# Sojiji Campus

A Hub of Knowledge, OIDA's Ibaraki Sojiji Campus serves as a vibrant center of learning. The campus features two iconic buildings:

**Academic Ark** : A uniquely triangular, symbolic structure.

**Academic Base** : A grand building stretching approximately 250 meters in length. More than 8,000 students and faculty gather here, fostering interdisciplinary exchange and creating new learning opportunities rooted in the northern Osaka (Hokusetsu) region.



## Learning from each other Teaching each other

More than just a meeting place for students  
It's also a point of contact with faculty

Spaces where students  
naturally come together  
and learn spontaneously



Research laboratories, classrooms,  
and innovation spaces right alongside each other  
Encouraging the integrated development of their respective work



Open to the Community

# Ai Campus

Cutting-edge laboratories for  
advanced studies



The main campus for the Faculty of Psychology  
and the Faculty of Science and Engineering



# OIDAI

## - At a Glance -

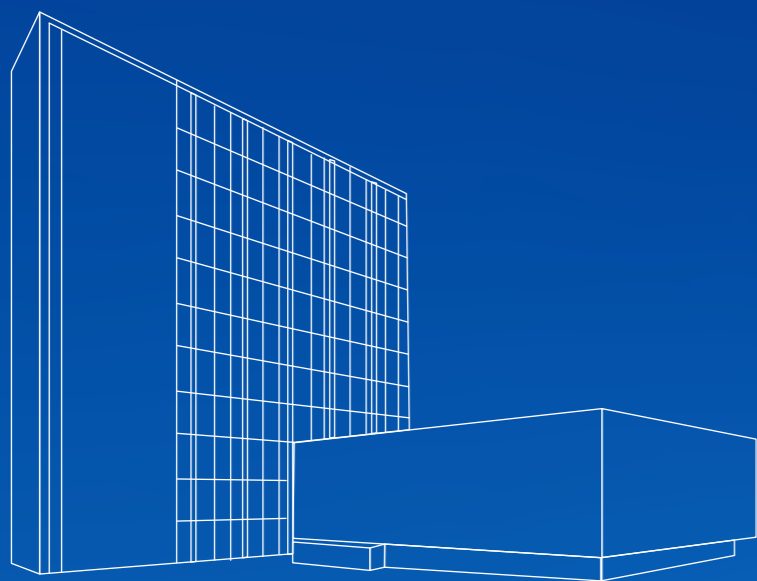


Year of establishment

**1966**

Campuses

**2**



Faculties

**9**

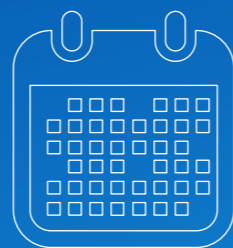
Graduate schools

**3**

### Academic calendar

Spring semester

**13 April-17 July**



Autumn semester

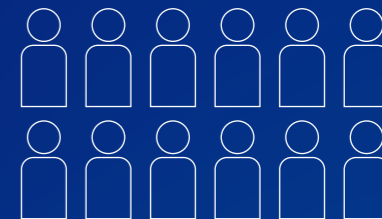
**1 October-25 January**



### Students

University

**9,359**



Graduate schools

**92**



Full-time faculty members

**267**



Research centers / Institutions

**10**



Books held in the university libraries

**522,471**

Overseas partner universities

**63**



Official student clubs

**48**

Olympic medalists (all in artistic swimming)

**3**

Official student circles

**26**

The shorinji kempo club won the national championship

The cheerleading club participated in international cheerleading competitions

**5**

**Numerous**



(As of 2025)

# 独立自強・社会有為

OIDAI's mission is to foster “Resilient Independence, Meaningful Contribution”.

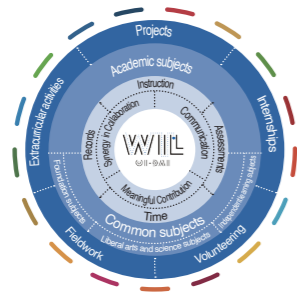
Otemon Gakuin is a comprehensive educational foundation which extends from nursery school through graduate school. We strive to instill in our students the following five specific traits.

- A democratic sensibility with a firm identity and respect for others, demonstrated by moderate behavior, with the courage to counter any violence that threatens the order and peace in society.
- A sharp and healthy sensitivity to aesthetic and ethical values, with a truly liberated spirit, strong will and a sense of responsibility.
- A well-rounded mind, capable of complex thought and of contributing to the development of the humanities, and the social sciences and natural sciences.
- A deep knowledge of Japanese history, culture and arts, with insights into Japanese language and the ability to use language to communicate effectively.
- An international viewpoint, social conscience, and a practical ability to contribute to the prosperity of the human race.

As key topics in OIDAI's educational initiatives, we emphasize the concepts of “AI, DX, and Co-creation,” which are also reflected in the university's 60th anniversary logo on the back cover. We seek to foster new forms of interaction for a new era by harnessing the power of AI and DX as a comprehensive university that transcends the boundaries between the humanities and sciences.

## Pick Up ODAI WIL

WIL registration/certification  
Registered/certified subjects  
**52**  
Number of classes  
**364**



In today's unpredictable environment, amid the dizzying changes brought about by globalization and digital transformation, we need to identify issues for ourselves in the course of our work, and continue to confront these issues while acquiring the knowledge, skills, and abilities necessary to solve them. Work-Is-Learning (WIL) is ODAI's unique learning style of problem-solving through independent learning and collaboration. By learning while working, and gaining experience that is immediately applicable in practice, students develop the ability to take action and continue learning even in unpredictable situations.

### ▶ Meaningful Contribution

The “Meaningful Contribution” that is one of our educational principles consists of doing one's best in good faith for the world and all its people. It means looking back at the world as it has been, while tackling the as yet unanswered challenges facing the world as it is now and will be in future.

### ▶ Synergy in Collaboration

Striving to derive optimal solutions for as yet unanswered challenges, by working together with a diverse variety of people through the sharing of wisdom and discussion.

### ▶ Communication

Daring to leave the classroom and communicate across the boundaries of age, geographical location, and preconceptions.



## Pick Up Educational Digital Transformation ODAI original application

With its seamlessly integrated contact functions from before starting university to after graduation, the ODAI app aims to provide enrolled students with opportunities for lifelong learning. This app functions in conjunction with the university's internal system as a unified portal for all student information, including timetables, viewing notifications from the university, individual schedule management, course registration, and communications with faculty. It is being developed as a student lifestyle hub, with regular updates to reflect student feedback. In tandem with the app's introduction, we have also started to construct a comprehensive database to bring together all types of internal university information. This is intended to lead to data-driven decision-making, operational improvements, and higher-level learning.



## Pick Up Micro-credential

Since April 2025, ODAI has been awarding “micro-credentials” in addition to degrees. These are certificates demonstrating the acquisition of knowledge or skills by completing specific programs unique to the university. To this end, the university has introduced “Open Badges” issued by the Open Badge Network Foundation, which are digital certificates that certify the knowledge or skills that have been studied.

Open Badges can be attached to a digital resume or published on social media, where they can function as visible credentials of the knowledge or skills studied by students. This can help make it easier for students to exhibit their skills and knowledge, for example when job-hunting. Because Open Badges incorporate blockchain technology, they cannot be forged or falsified in real terms, and can thus be used as trustworthy credentials.

A collection of Open Badges can be managed all together in an Open Badge Wallet, making it easy to see what knowledge and skills have been learned. Open Badges are being issued for subjects including Global Communication Skills and Mathematics, Data Science and AI Smart Higher Education.

The university also actively collaborates with the Japan Micro-credentials Organization, established in 2025 with the aim of advancing international cooperation in micro-credentials and promoting the adoption of micro-credentials in Japan.



# Faculties & Graduate Schools



## Faculty of Science and Engineering

- Department of Mathematical and Data Science
- Department of Mechanical Engineering
- Department of Electrical and Electronic Engineering
- Department of Information Engineering



This curriculum develops problem-solving skills from both scientific and engineering perspectives. Through the interdisciplinary Science and Engineering Project, a project-based learning course, students acquire a multifaceted understanding of social issues and the knowledge required to create new value. Faculty members conduct research across a wide range of fields, from fundamental science to applied engineering, including mathematical informatics, system control theory, fusion energy, semiconductors, optical communications, high-performance computing, AI, motor design, and materials engineering. Through comprehensive experiments and practical training, together with the latest research facilities, the program fosters engineers and researchers capable of meeting the needs of society.

## Faculty of Letters

- Japanese Literature Major  
Covers a wide range of research areas, from classical works to contemporary animation
- Japanese History and Culture Major  
Explores the present through history and culture, from the past to the modern era
- Aesthetics and Architectural Culture Major  
Enables students to take the First-Class Architect Examination. A new and practical interdisciplinary program integrating the humanities and sciences



Students are encouraged to pursue unique research aligned with their interests, without being confined to conventional fields of literary studies. The program cultivates deep understanding and critical thinking regarding human cultural activities. Faculty members teach specialized subjects across diverse fields, including Japanese literature from classical to modern and contemporary periods, Japanese linguistics, Chinese history, and the interdisciplinary field of aesthetics and architectural culture. Students may also take subjects across courses, developing communication skills that enhance cultural expression and mutual understanding.

With the establishment and expansion of faculties, ODAI continues to be selected by applicants.

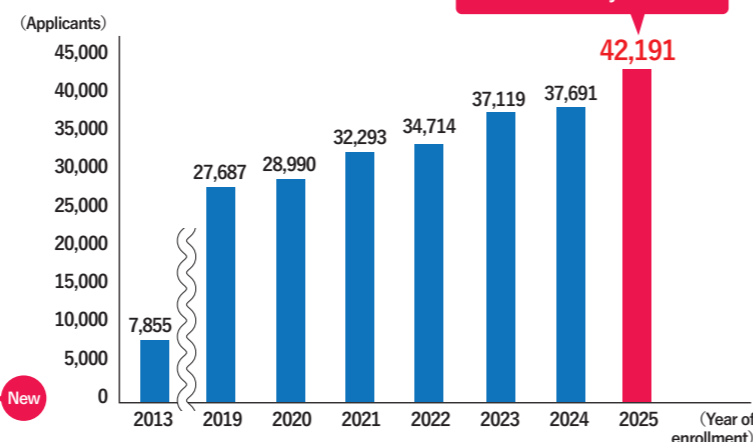
2021	2022	2023	2025
Faculty of Psychology	Faculty of Psychology	Faculty of Psychology	Faculty of Psychology
Faculty of Sociology	Faculty of Sociology	Faculty of Sociology	Faculty of Sociology
Faculty of Economics	Faculty of Economics	Faculty of Economics	Faculty of Economics
Faculty of Management	Faculty of Management	Faculty of Management	Faculty of Management
Faculty of Regional Development Studies	Faculty of Regional Development Studies	Faculty of Regional Development Studies	Faculty of Regional Development Studies
Faculty of International Liberal Arts	Faculty of Letters <b>New</b>	Faculty of Letters	Faculty of Letters
	Faculty of International Studies <b>New</b>	Faculty of International Studies	Faculty of International Studies
		Faculty of Law <b>New</b>	Faculty of Law
			Faculty of Science and Engineering <b>New</b>

### Number of Applicants to ODAI

(Aggregate of all entrance examinations in 2013 to 2025)

The number of applicants has increased for 13 consecutive years.

In 2025, the number of applicants reached an all-time high, up 4,500 from the previous year.



## Faculty of International Studies

- Global Studies Major
- International Culture Major

Building on English proficiency, the program develops the ability to identify next-generation challenges and solutions from a global perspective. Faculty research spans a wide range of fields, including development studies, area studies, international economics, and sociology, as well as English as a Foreign Language (EFL), Hindi literature, and computer-assisted language learning (CALL). Specialists in international education and exchange methodologies are also part of the faculty. Through study abroad at leading universities worldwide and internships at international companies, the program offers diverse opportunities to simultaneously develop practical English skills and broad cultural knowledge.



## Faculty of Psychology

### ■ Psychology Major

Social and Criminal Psychology Course / Cognitive and Brain Sciences Course / Developmental and Educational Psychology Course / Clinical Psychology Course

The program offers four specialized courses that provide a systematic study of psychology in areas such as human relationships, education, business, and crime. Through a wide range of practical programs, students acquire skills that can be applied immediately in professional settings. Faculty members specialize in diverse fields including clinical psychology, psychoanalysis, social psychology, criminal psychology, and cognitive psychology, and deliver education that integrates scientific approaches to quantifying the mind and behavior with practical application.

### ■ Artificial Intelligence and Cognitive Science Major

Artificial Intelligence: Image and Video Media / Language Media / Machine Learning and Data Science  
Cognitive Science: Thinking and Decision-Making / Embodied Cognition and Control

The program offers a systematic study of artificial intelligence (AI), from its fundamentals to cutting-edge technologies, together with broad education in cognitive science that uses mathematical approaches to elucidate human intelligence, and diverse fields of psychology. Faculty members include specialists in information science fields such as image, natural language, and intelligent sensing processing, as well as in human sciences fields including cognitive science, motor control, and perceptual psychology. A defining feature of the program is its advanced interdisciplinary research that explores the interface between humans and AI, with the goal of realizing human-centered AI.



## Faculty of Sociology

### ■ Sociology Major

Contemporary Sociology Course / Sociocultural Design Course / Social Issues Course

### ■ Sports Culture Studies Major

Sports Culture Design Course / Community and Health Sports Course / Sports Career Course

In the Sociology Course, students develop the ability to academically analyze and understand society and culture through fieldwork, while also placing emphasis on cultivating originality and initiative through creative activities such as dance, theater, and video production. In the Sports Culture Studies Course, which is rare even within Japan, education and research focus on viewing sports as a cultural and social phenomenon, examining its roles and significance from multiple perspectives in relation to society. Faculty members specialize in a wide range of fields, including sociology, gender, migration, and folklore, as well as sociology of law, archival studies, and further areas such as sports science, exercise physiology, and cultural and expressive fields including video and media art and aesthetics. Interdisciplinary and highly specialized research is actively pursued.



## Faculty of Law

### ■ Policy Law Course ■ Corporate Law Course

Adopting a citizen-centered perspective, the program develops a new style of legal studies that actively addresses issues aligned with the needs of contemporary society, including gender, international relations, and corporate legal affairs. Faculty members specialize in fields such as civil law (civil and corporate law), public law (constitutional and administrative law), and international law. In addition to legal knowledge, the program places emphasis on cultivating individuals with broad intellectual foundations and the capacity for independent judgment. Small-group, discussion-based and proactive learning among students is emphasized, with the aim of developing experts in policy law and corporate legal affairs.



## Faculty of Economics

- Public Economics Course ■ Financial Economics Course
- Environmental Economics Course ■ Consumer Economics Course
- Lifestyle Economics Course ■ Diverse Society Course
- International Media Course

The program aims to cultivate the ability to engage in theoretical analysis of economics and to apply that thinking to society. Through a diverse course structure closely connected to everyday life and future career paths, it offers practical economics education. Extensive firsthand training develops individuals with strong logical thinking and innovation skills. Faculty members pursue a wide range of specialized fields addressing contemporary issues, including theoretical economics, economic thought, public economics, fiscal science and local public finance, as well as applied econometrics, economic statistics, finance, labor economics, environmental policy, gender, and studies of declining birthrates and aging societies.



## Faculty of Management

- Management and Marketing Major
- Business Law Major
- Business Psychology Major
- Information Systems Major

Centered on management studies, the program offers an interdisciplinary structure encompassing four specialized fields: marketing, business law, business psychology, and IT (programming). Through original business plan contests and regional branding initiatives, students develop practical skills and the ability to address social issues. Faculty members consist of specialists who provide multifaceted perspectives on business, with expertise in management, strategic management, marketing, industrial psychology, behavioral metrics, financial accounting, corporate law, and information engineering.



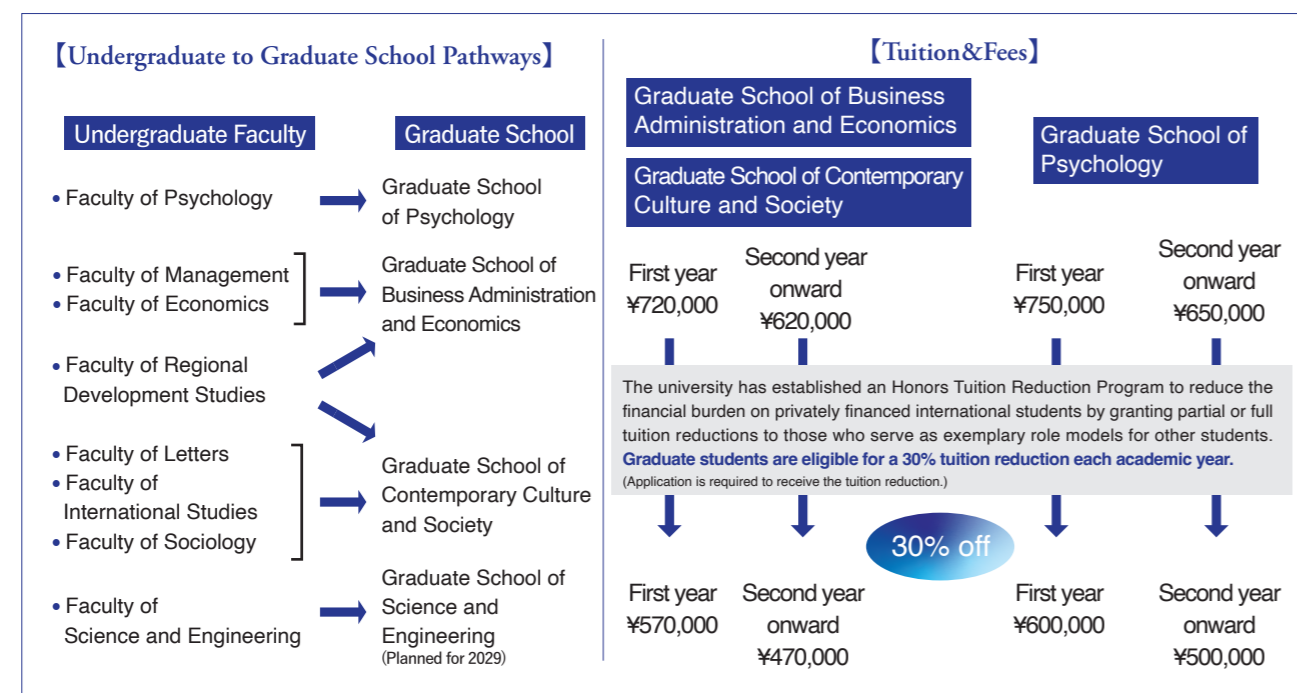
## Faculty of Regional Development Studies

- Food and Agriculture Management Course ■ Regional Policy Course
- Tourism Course ■ Regional Design Course

The program provides practical education that enables students to accurately understand diverse social issues and work toward their resolution. Emphasis is placed on fieldwork both in Japan and overseas, and by collaborating with local communities to explore solutions, students develop the ability to discover and create regional value and appeal. Research themes span a wide range of areas, including disaster recovery, tourism development, art, and the promotion of food culture. Faculty members bring together diverse areas of expertise, from regional studies fields such as regional management, regional policy, urban geography, urban-rural exchange studies, and food and agricultural economics, to interdisciplinary fields including architectural and urban planning, sustainable tourism, cultural economics, policy evaluation, and small and medium-sized enterprise studies.



# Graduate Schools



## Business Administration and Economics Master&Doctor

The program cultivates the ability to analyze theory and practical case studies in company and organization business fields, as well as in public institution policy and management fields, while developing the capacity to identify and solve issues. It aims to foster highly skilled professionals with independent research capabilities that form the foundation for professional career development.

### Management Course

#### Business Research Field

Students engage in systematic and in-depth study of theories, systems and policies, and practical case studies in specialized fields of management studies, including management, management strategy, and marketing skills, and acquire quantitative and qualitative analytical and critical thinking skills that contribute to identifying and resolving business issues.

#### Accounting and Management Information Research Field

Students engage in systematic and in-depth study of theories, systems and policies, and practical case studies in specialized fields of accounting and management information, such as financial accounting and management analysis, and acquire analytical methods and critical thinking skills that contribute to identifying and resolving issues in accounting and management information.

#### Corporate Legal Affairs Research Field

Students engage in systematic and in-depth study of theories, systems and policies, and legal cases in the area of business law, including civil law and company law, and acquire the ability to investigate, analyze, and examine issues related to corporate legal affairs in Japan and overseas.

Master's Program	Doctoral Program
Master of Business Administration	Doctor of Philosophy (Ph. D.) in Business Administration
Master of Economics	Doctor of Philosophy (Ph. D.) in Economics
Master of Regional Policy	Doctor of Philosophy (Ph. D.) in Regional Policy

### Economics Course

#### Economics Research Field

Students engage in systematic and in-depth study of theories, systems and policies, and historical perspectives in specialized fields of economic research, including economic policy, financial economics, and finance analysis, and acquire mathematical analytical methods necessary for economic policy analysis.

#### Regional Policy Research Field

Students address issues in regional economies and regional management, and acquire the ability to identify, analyze, and examine regional issues while systematically and deeply studying theories, policies, and applied case studies in the specialized field of regional policy.

#### Available qualifications

Specialized Teaching Certificate for Junior High School Teachers (Social Studies), Specialized Teaching Certificate for Senior High School Teachers (Civics and Commerce)

Eligibility to sit for the SAP\* Certified Consultant Examination

\* SAP is a world-leading software company headquartered in Germany in the field of business process management. The SAP Certified Consultant qualification certifies that the holder has acquired knowledge and skills related to SAP systems, including ERP packages.

## Psychology Master&Doctor

The program aims to cultivate highly specialized professionals who can work as psychology practitioners with professional qualifications, individuals with broad and advanced expertise in psychology and information science who support a knowledge-based society, and individuals who will go on to become future researchers.

### Clinical Psychology Course

This course is accredited as a Type I designated program by the Foundation of the Japanese Certification Board for Clinical Psychologists. It provides education with the dual focus of the training of researchers in clinical psychology and the development of highly specialized professionals who use advanced knowledge and skills in psychological practice to engage with and support individuals facing psychological difficulties.

### Lifelong Development Psychology Course

Based on advanced specialized knowledge in psychology, this course aims to enable students to take the Clinical Developmental Psychologist and School Psychologist examinations and to pursue careers as well-trained professionals in society. At the same time, the curriculum aims to cultivate individuals with broad and advanced expertise in cognitive and brain sciences, developmental psychology, and educational psychology who support a knowledge-based society, as well as to develop future researchers.

### Social and Criminal Psychology Course

This course is designed to cultivate individuals with advanced specialized knowledge in psychology who support a knowledge-based society, while also fostering researchers in social psychology and criminal psychology. The curriculum aims to develop professionals who can propose solutions to issues arising in a wide range of real-world settings based on specialized knowledge and put those solutions into practice themselves.

### Artificial Intelligence and Cognitive Science Course

This course aims to cultivate researchers and highly specialized professionals with deep knowledge and advanced practical skills related to human and machine intelligence and information processing. Through social implementation and academic contributions, it seeks to contribute to the development of a society in which humans and artificial intelligence exist in harmony. The curriculum is designed to develop individuals equipped with knowledge and skills in information science fields such as artificial intelligence and cognitive science, enabling them to address complex human and societal challenges.

#### Available qualifications

Specialized Teaching Certificate for Junior High School Teachers (Social Studies), Specialized Teaching Certificate for Senior High School Teachers (Civics)

Clinical Psychology Course: Certified Public Psychologist, Clinical Psychologist

Lifelong Development Psychology Course: Certified Public Psychologist, Clinical Developmental Psychologist, School Psychologist

Social and Criminal Psychology Course: Clinical Developmental Psychologist, School Psychologist

Master's Program	Doctoral Program
Master of Psychology	Doctor of Philosophy (Ph. D.) in Psychology
Master of Science	

Qualification Name	Qualification Category	Primary Fields of Practice	Primary Roles	Key Features
Certified Public Psychologist	National qualification	Medical care, welfare, education, judicial, industry	Psychological assessments, psychological support, consultations	Japan's first national qualification for psychology professionals. Able to work across a wide range of fields
Clinical Psychologist	Private qualification	Medical care, education, welfare	Psychological testing, counseling, psychotherapy	A long-established qualification with high credibility in clinical practice
Clinical Developmental Psychologist	Private qualification	Education, welfare, medical care	Psychological support from a developmental perspective	Specialized in developmental disorders and developmental support
School Psychologist	Private qualification	School (kindergarten through high school)	Psychological, learning, and behavioral support for children and students	A psychology profession specialized in school settings

## Contemporary Culture and Society Master only

As interest in international society grows with the advance of globalization, attention is also focusing on Japan's traditional culture and the regional communities that support it, as symbolized by the rise in inbound tourism. This graduate school offers learning that responds to these contemporary trends. All courses allow students to take subjects offered in other courses, enabling them to deepen expertise in their chosen field while also pursuing interdisciplinary study in related areas.

### Contemporary Sociology Major

#### Contemporary Society Course

Focusing on the complex and rapidly changing nature of the contemporary era, this course approaches key issues of modern society, including industrial diversification, technological advancement, digitalization, globalization, and population aging, from both theoretical and empirical perspectives. Research fields include the Contemporary Social Issues, Sociology Research, and Sociocultural Design.

#### Sports Culture Course

Viewing sports as a systematic field involved in the cultural formation of society, this course covers a wide range of areas, from fundamental issues in sports to a wide range of fields in which sport appears in everyday social life, including culture, industry, psychology, medicine, health, and media.

#### Regional Development Course

This course explores the ideas, techniques, and foundational knowledge required to understand challenges faced by local communities, rediscover latent resources and value, and create sustainable regional societies. Through the research fields of Planning and Design, Regional Policy, and Tourism, students can acquire diverse and advanced areas of expertise.

#### Available qualifications

Contemporary Sociology Major: Specialized Teaching Certificate for Junior High School Teachers (Social Studies), Specialized Teaching Certificate for Senior High School Teachers (Civics)

Humanities and International Studies Major: Specialized Teaching Certificate for Junior High School Teachers (English and Japanese), Specialized Teaching Certificate for Senior High School Teachers (English and Japanese)

### Humanities and International Studies Major

#### International Studies Course

This course develops advanced proficiency in English as a global language, together with knowledge of English linguistics, English literature, and cultural geography. Elective subjects are offered in Linguistics, which deepens inquiry into language; Foreign Language Education, which explores pedagogy and teaching methodologies; and Overseas Culture and Communication, which focuses on intercultural management.

#### Humanities Course

This course cultivates the ability to conduct international and academic research on Japanese culture in relation to the rest of the world and to communicate the value of Japanese culture globally. Through a broad range of studies, the course aims to develop advanced knowledge and practical proficiency in the Japanese language, including for international students.

Master's Program
Master of Regional Development Studies
Master of Sociology
Master of International studies
Master of Arts



# Research Pick up

## OIDAI Research Policy

Contribute to the well-being of society through research

### Research agenda

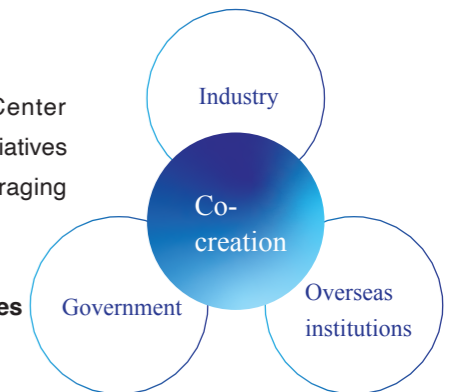
- 1 — Promote distinctive and creative research
- 2 — Foster interdisciplinary co-creation research, such as integrative research encompassing the humanities, social sciences and natural sciences
- 3 — Contribute to the benefit of society by applying research results for practical use
- 4 — Create a research environment that accelerates the above endeavors

# Laboratory

## Hub for Innovation and Co-creative Applied Research

### Research policy

- 1 As a research hub of the northern Osaka (Hokusetsu) region, the Center accelerates co-creation research by providing funding to the following initiatives under the university's research support program, with the aim of encouraging the development of Innovation and co-creation research projects.
  - ① **Interdisciplinary research, such as integrative research encompassing the humanities, social sciences and natural sciences**
  - ② **Research through industry-academia-government collaboration**
  - ③ **Joint research with international partners**
  - ④ **Startup creation**
- 2 The Center is responsible for systematically dealing with external research partners.
- 3 The Center encourages research exchanges, both internal and external, to accelerate co-creation research initiatives and publicly provides information on research.



### Message

As a comprehensive university, OIDA established the Hub for Innovation and Co-creative Applied Research in July 2024 to accelerate the process of achieving research results and applying the results for practical use in society.

We call on all the faculties to submit ideas for innovative research projects and provide funding to adopted projects. We also offer support for sharing information on the research projects externally. In doing so, we are systematically promoting a diverse range of research activities.

**Yuji Kanemasa**

Director, Hub for Innovation and Co-creative Applied Research



### Close up

## Joint research with Université Laval in the fields of artificial intelligence and cognitive science

OIDAI signed a comprehensive partnership agreement with Université Laval (Province of Québec, Canada). In 2021, the university opened the Artificial Intelligence and Cognitive Science Major in the Department of Psychology, Faculty of Psychology to explore a new STEM discipline that brings together studies of the mechanism of human intelligence and artificial intelligence (AI). Through this agreement, we aim to enhance our educational and research capabilities and increase our international presence in the relevant fields. This joint research is one of our international industry-academia collaboration projects, and is conducted with funding under the university's co-creation research support program. We will help build the intellectual foundation for the next generation by promoting international industry-academia collaboration research and encouraging exchanges among faculty and students in the fields of AI, cognitive science, neuroergonomics and psychology.



# Research

## Developing innovative batteries for a brighter future

Tsuyoshi Takami  
Professor, Faculty of Science and Engineering

### Research interests

Professor Takami's research is founded on studies of material science, applied physics, and solid-state chemistry. He is developing electrical and electronic functional materials for rechargeable batteries and conducting research to elucidate the mechanisms using measurement and analysis techniques. With the development of new battery materials to replace lithium underway, he is focusing on fluoride-ion batteries, which could achieve an energy density several times higher than that of lithium-ion batteries. Recognizing its strong potential for next-generation batteries, he is researching fluoride-based battery technology.



### Novelty and superiority of the research

Fluorine-containing solid electrolytes could be the key to overcoming the challenges of operating all-solid-state fluoride-ion batteries at room temperature. Achieving superionic conductivity at room temperature for solid electrolytes is ideal for this purpose. However, the number of solid electrolyte types that can be synthesized using the conventional solid-state reaction method is limited. We developed a novel chemical fluorination technique and achieved superionic conductivity near room temperature in a novel material not found in databases [J. Mater. Chem. A Vol.13, 1478 (2025)]. This technique enables the creation of materials unpredictable by AI, and is bringing about a game-changing shift in this field.

### Application and practical use

All-solid-state fluoride-ion batteries are likely to emerge as a breakthrough technology to solve global energy issues. These batteries can serve as a residential power source for infrastructure for daily life. They can also serve as an energy source for various mobility platforms, such as EVs, drones, and construction machinery, to enable cleaner, more powerful operation. In addition, they can assist the efficient use of renewable energy, which is indispensable for a decarbonized society. They can also play a key role in enhancing the safety and resilience of communities as a backup power source for emergencies.

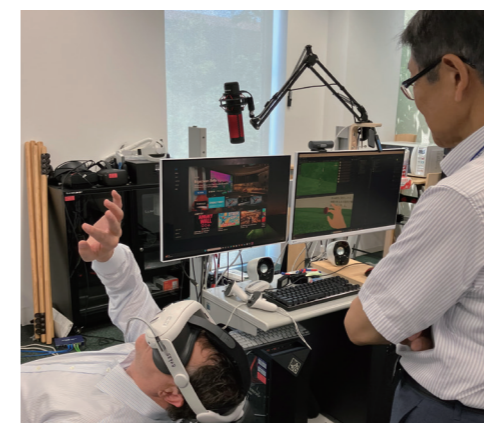


## The cutting edge of avatar technology

Susumu Maruno  
Professor, Faculty of Psychology

### Research interests

Professor Maruno's research focuses on co-working in a virtual space as well as telemedicine and remote collaboration through avatar robots. Avatar robotics provide an interface that creates a sense of agency, giving users the feeling of being in control of their actions such as seeing, hearing, moving, touching and sensing through their avatars in the metaverse.

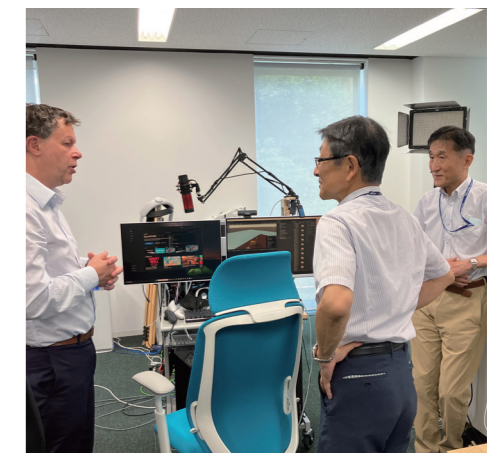


### Novelty and superiority of the research

Conducting robotics research in a metaverse space is not comparable to controlling an avatar from the outside as in conventional VR games. This research aims to create an environment that enables users to act with a strong sense of agency by providing an advanced virtual space in which users can see, touch and sense in the same way as they do in a real space. This allows us to expand human abilities not only within a metaverse space but also into a physical space in a remote location, which will dramatically improve the way social activities are carried out.

### Application and practical use

Avatar technology is contributing to advances in telemedicine by enabling doctors to remotely treat patients through avatar robots, while creating a new workstyle for collaboration in a metaverse space. The technology also allows people to jointly control a remote avatar robot, which will change the way work is done in a real space in fields such as construction, facility maintenance and disaster response. Moreover, by placing avatar robots in tourist spots overseas and event venues, people will be able to virtually experience traveling abroad and joining activities as if they were in the real environment, thus adding new dimensions to cultural and traveling experiences beyond the barriers of distance and physical constraints.



## Reforming Local Administration and Regional Development Strategies

Naoki Fujiwara  
Professor, Faculty of Regional Development Studies



### Research interests

Professor Fujiwara conducts research on local government policies as well as administrative and regional organizations' management practices for sustainable regional development, focusing on regional policy, local government management, and regional international strategy. His research involves fieldwork by students to explore attractive features of communities and video streaming to introduce such features, with the aim of supporting public-private community development efforts, such as for promoting tourism, helping young people to relocate to rural communities, ensuring the healthy growth of children and adolescents and adding value to local specialties.



### Novelty and superiority of the research

Professor Fujiwara engages in research on regional policies as well as administrative and regional organizations' management practices, based on his experience in undertaking various tasks for a government ordinance-designated city. He received the CIRIEC Japan Award for his book *Local Government Industrial Policy in the Age of Globalisation* in 2018 and Carlos P. Ramos Award for Best Conference Paper in the Conference of the Eastern Regional Organization for Public Administration in 2019.

### Application and practical use

Research on local government policies as well as administrative and regional organizations' management practices

- Participation of his seminar students in new community revitalization projects as part of research guidance for them
- Provision of advice and consultation to local governments concerning industrial promotion plans and development and operation plans for water and sewerage systems and other infrastructure

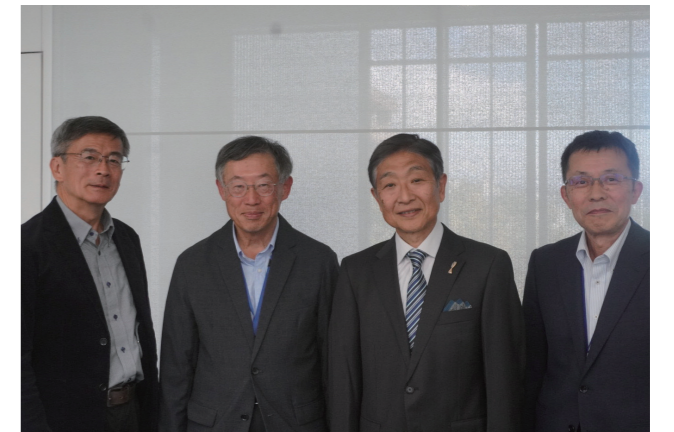
### Municipal International Policy- Developmental Model

Model	Traditional Administration	New Public Management	Network Governance
<b>Governance Purpose</b>	Input and Service Delivery Management	Responsiveness to Customers Output Efficiency Management	Realization of Citizens' Interests Maximization of Outcomes Efficiency in Business Matching
<b>Organizational Principle</b>	Bureaucracy	Market	Network
<b>Interorganizational Relations</b>	Hierarchy/In-house Management	Competition/Contract	Collaboration/Partnership
<b>Purpose of International Exchange</b>	Administrative, Cultural, and Youth Exchange	Economic (Social) Pragmatism	Balancing Urban Problem Solving and Business, Innovation Creation, Project Making
<b>Operational Models of Overseas Offices</b>	Directly Operated	Business Support Desk (Outsourced)	Joint Municipal Office (Multiple Local Governments) Industry-Public Joint Office (Regional Banks, Universities)
<b>Forms of International Exchange</b>	Sister Cities/Friendship Exchange (Bilateral)	Business Partner Cities, Purpose-specific Inter-city Exchange	Participation in International Municipal Collaboration

## Collaboration

### Industry-Academia-Government Collaboration Section

As the university's one-stop contact point for industries (companies), the Office provides centralized management of information related to industry-academia-government collaboration, both internal and external, to facilitate the university's partnership endeavors systematically. By actively promoting joint research, collaborative projects and regional contribution projects, the Office serves as a co-creation hub for industrial growth, regional revitalization and cultural development.



If you are interested in international joint research with the university, please contact the Office by email: [sangakukan@otemon.ac.jp](mailto:sangakukan@otemon.ac.jp)

Close up

### 1 Interdisciplinary research for the practical use of all-solid-state fluoride-ion batteries

On July 30, 2025, a kickoff meeting was held at OIDA's Ibaraki Ai Campus to mark the start of a research project "Control and elucidation of fluoride-ion conduction in solid electrolytes," led by Professor Tsuyoshi Takami of the Department of Electrical and Electronic Engineering, Faculty of Science and Engineering. This research project aims to develop innovative next-generation batteries by combining cutting-edge research findings and technologies through collaboration with other universities, external research institutions and companies as part of the university's industry-academia initiatives.



Close up

### 2 Partnership with Gamba Osaka

OIDA signed a partnership agreement with a professional Japanese football club, Gamba Osaka, to work toward the common goal of contributing to the good of society and nurturing next-generation leaders. Under this agreement, the following activities are being carried out in collaboration:

- 1 Eco-volunteer activities by students
- 2 Practical project in which students plan and propose events to be implemented at the home stadium of Gamba Osaka
- 3 Cooperation in local events
- 4 Placement of ads



# International Cooperation

As a gateway to Asia, Osaka has been playing a key role in international exchanges and trade since ancient times. As a university located in Osaka, OIDA is working to promote international understanding and produce cutting-edge innovations in its own way, backed by Osaka's history of international exchanges spanning over 1,400 years, position as an academic center with its many universities, and innovative spirit fostered through hosting the 1970 and 2025 Expos. As the number of partner universities steadily increases, we hope to work with our partners around the world to create new value for continued growth and development. For example, we aim to promote international collaboration using micro-credentials, in addition to through student exchanges under the existing credit transfer system.

## Support for international students

### Japanese Partners

Japanese students partner with international exchange students to assist them in their Japanese language studies.



### E-CO (English Café at Otemon)

E-CO is a self-directed learning environment where students can study foreign languages through interactive communications. Workshops and events are also held here.



### Student Support @Academic Ark

Students and administrative staff assist international students with everyday problems in living.



### PICK UP

## Center for Australian and Asian Studies

In April 2015, OIDA established the Center for Australian and Asian Studies by expanding and reorganizing the Center for Australian Studies, which was highly recognized both nationwide and internationally as Japan's first research institution specialized in Australia since its inception in 1967. The Center for Australian and Asian Studies inherited and is developing the outcomes of its predecessor, as well as conducting research and education to adapt to the globalization and changes of international society in line with our educational principle, "Resilient Independence, Meaningful Contribution." Building on the educational and research achievements of the Center for Australian Studies, the Center for Australian and Asian Studies conducts academic research on Australia, ASEAN countries, India, Japan, and the rest of the Asian region, while working to foster mutual understanding and promote academic and cultural exchanges with this region. The outcomes of the Center's activities are shared widely with society and applied to education through various events such as international symposiums, workshops and lectures.



### PICK UP

## Financial support program for international academic conferences

We offer financial support to the organizers of international academic conferences held at OIDA's campus. This program will help facilitate collaboration with faculty members of OIDA.

**Support amount** Up to 2 million yen, available for part-time wages, reception fees, invitation expenses, etc.

**Eligible applicants** Full-time faculty members of OIDA

**Requirements** All of the following four conditions must be met.

- ① The international academic conference is hosted by an academic organization in which a full-time faculty member of OIDA is a member.
- ② A full-time faculty member of OIDA plays a leading role in organizing the international conference.
- ③ The conference does not interfere with the educational and research activities of OIDA.
- ④ The conference is held at OIDA.

**Application deadline** Please apply by the end of October for conferences scheduled for the next academic year (from April to March).

## Message

A rapidly-growing, ambitious university, OIDA recently established a new faculty, introduced new fields of study, expanded student enrollment and opened a new campus. In promoting international operations, our aim is not just to increase the number of partner universities, but to foster true partnerships with more overseas counterparts to promote meaningful interactions and contribute to the world. In this light, we hope to work with universities and research institutions around the world to fulfill all the key missions of universities in the areas of education, research and social contribution. We look forward to working with you.

**Takeshi Matsui**  
Vice President in charge of international relations



## Partner universities

### 8 in Europe

- Czech Republic**
  - Czech University of Life Sciences Prague
- Germany**
  - PFH Private University of Applied Sciences
- Ireland**
  - University of Limerick
- Italy**
  - University of Cagliari
- Netherlands**
  - Fontys University of Applied Sciences
- Poland**
  - AGH University of Krakow
- Spain**
  - University of Huelva
- UK**
  - Regent's University London

### 30 in Asia

- China**
  - Hong Kong Metropolitan University
  - Nanjing University
  - Shanghai Normal University
- India**
  - Gujarat University
  - Pandit Deendayal Petroleum University
- Korea**
  - Baewha Women's University
  - Daejin University
  - Gwangju University
  - Hannam University
  - Hanyang University ERICA
  - Konkuk University
  - Namseoul University
  - Sangmyung University
  - Yeungnam University
- Malaysia**
  - International University of Malaya-Wales
- Nepal**
  - Kathmandu University
  - Purbanchal University
- Philippines**
  - Cebu Doctor's University
  - Enderun Colleges
  - University of Perpetual Help
- Taiwan**
  - National Taiwan University of Sport
  - Providence University
- Thailand**
  - Chiang Mai University
  - Khon Kaen University
  - Rangsit University
  - Thaksin University
- Vietnam**
  - Foreign Trade University
  - Ho Chi Minh City University of Education
  - Phuong Dong University
  - Vietnam National University, Hanoi

### 8 in Oceania

- Australia**
  - Flinders University
  - Griffith University
  - Queensland University of Technology
  - Swinburne University of Technology
  - The University of Adelaide
  - The University of Melbourne
  - The University of Queensland
  - University of the Sunshine Coast

### 17 in North America

- Canada**
  - Bowvalley College
  - Simon Fraser University
  - Université Laval
- USA**
  - Bellevue College
  - College of Liberal and Professional Studies, University of Pennsylvania
  - Ferris State University
  - Green River College
  - Kapi'olani Community College
  - Northwestern Michigan College
  - Presbyterian College
  - Seattle Colleges
  - Snow College
  - University of California, Berkeley – Summer Sessions
  - University of Hawaii, 7 Community Colleges
  - University of Mississippi
  - University of West Georgia
  - Valdosta State University

# Location



Access



## A Safe, Green, and Convenient Location Ibaraki-city, Osaka

### Green Surroundings

A green belt extends for around 5 km through the city center, its pathways perfect for strolling or jogging.



### Good Transport Links

Easy access to the centers of Kyoto and Osaka. Osaka Itami Airport is only around 23 minutes away via the Osaka Monorail.



### History and Culture



Famous as the hometown of Yasunari Kawabata, the first Japanese winner of the Nobel Prize in Literature.

### Open and Lively

"Onikuru," the Ibaraki City Cultural and Childcare Complex, houses a civic activity center, a library, and a planetarium, and is the base for many different events and activities.



©Nacasa & Partners Inc

# Travel Kansai, Discover Japan.

## Osaka

*Food capital & Entertainment*



A vibrant city that is not only a commercial and cultural center but also offers a wide variety of dining and entertainment experiences.



©Osaka Convention & Tourism Bureau

The ancient capital, with a history stretching back more than a thousand years. Its temples, shrines, and traditional culture, including World Heritage sites, are still much in evidence today, offering different beauties in each season.



## Kyoto

*Traditional culture & World Heritage*

A region of glorious natural scenery, from the sea to the mountains, with an international port city as its focus, this area offers a host of tourist sites, hot spring resorts, and cultural facilities.



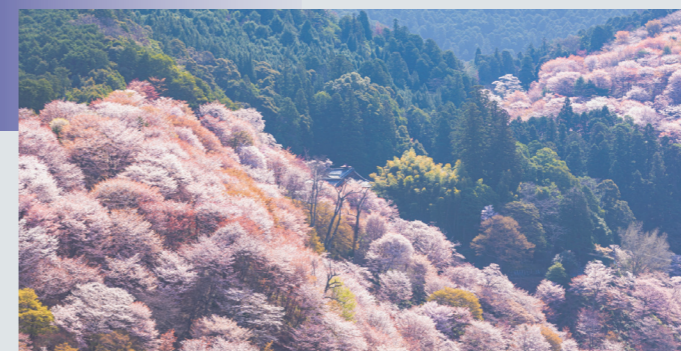
©KOBE TOURISM BUREAU

## Nara

*Ancient history & Nature*



With its ancient historical remains that harmonize with the natural environment, Nara is a tranquil city where deer roam many of the famous tourist spots.



## Hyogo

*International port city*

